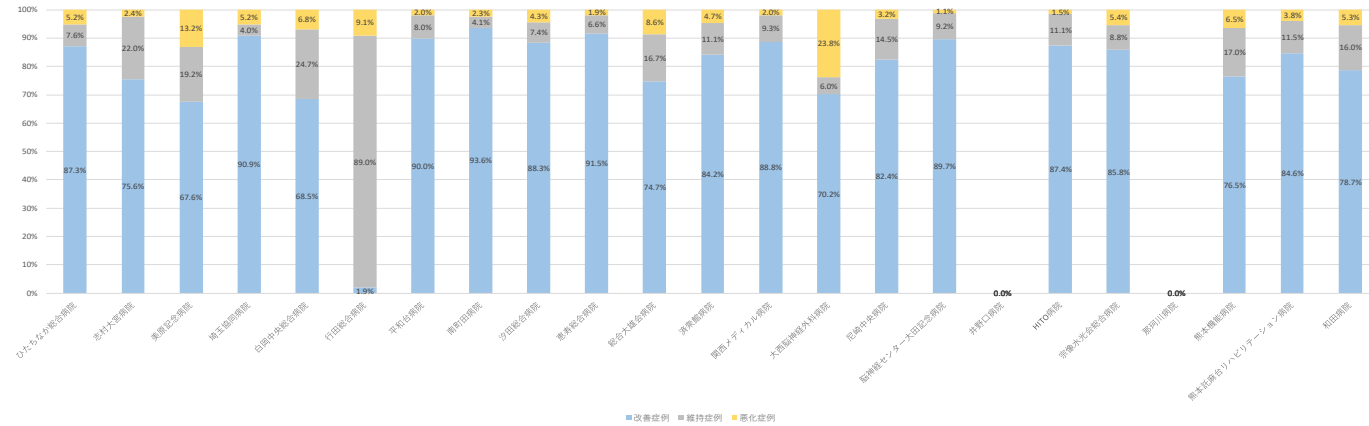


■ ADLスコアの改善率(回復リハ)

No	病院名	病床数	2019年度			2019年4月			2019年5月			2019年6月			2019年7月			2019年8月			2019年9月			2019年10月			2019年11月			2019年12月			2020年1月			2020年2月			2020年3月					
			改善率	維持率	悪化率	改善率	維持率	悪化率	改善率	維持率	悪化率	改善率	維持率	悪化率	改善率	維持率	悪化率	改善率	維持率	悪化率	改善率	維持率	悪化率	改善率	維持率	悪化率	改善率	維持率	悪化率	改善率	維持率	悪化率	改善率	維持率	悪化率	改善率	維持率	悪化率						
1	ひたちなか総合病院	50	87.3%	7.6%	5.2%	95.2%	4.8%	0.0%	94.7%	5.3%	0.0%	86.7%	13.3%	0.0%	82.6%	13.0%	4.3%	91.3%	8.7%	0.0%	72.7%	13.6%	13.6%	87.5%	4.2%	8.3%	95.2%	4.8%	0.0%	84.0%	12.0%	4.0%	85.7%	9.5%	4.8%	94.1%	0.0%	5.9%	80.0%	0.0%	20.0%			
2	志村大塚病院	50	75.0%	22.0%	2.4%	44.4%	51.9%	3.7%	72.7%	22.7%	4.5%	45.8%	50.0%	4.2%	70.4%	29.6%	0.0%	80.0%	20.0%	0.0%	91.3%	8.7%	0.0%	77.8%	22.2%	0.0%	81.0%	14.3%	4.8%	84.0%	16.0%	0.0%	90.5%	4.8%	4.8%	91.7%	4.2%	4.2%	83.3%	13.3%	3.3%			
3	福寿記念病院	83	67.6%	19.2%	13.2%	0.0%	0.0%	0.0%	100.0%	50.0%	20.0%	68.8%	25.0%	6.3%	62.1%	20.7%	17.2%	73.3%	16.7%	10.0%	73.8%	9.5%	16.7%	76.7%	16.7%	6.7%	56.8%	29.7%	13.5%	66.7%	16.7%	16.7%	65.7%	17.1%	17.1%	63.0%	28.3%	8.7%	78.4%	13.5%	8.1%			
4	埼玉国際病院	50	90.9%	4.0%	5.2%	85.7%	0.0%	14.3%	88.2%	5.9%	5.9%	100.0%	0.0%	0.0%	78.3%	8.7%	13.0%	100.0%	0.0%	0.0%	95.7%	4.3%	0.0%	95.2%	0.0%	4.8%	88.9%	5.6%	5.6%	92.9%	2.6%	3.6%	100.0%	0.0%	0.0%	83.3%	0.0%	16.7%	82.8%	13.8%	3.4%			
5	白田中央総合病院	41	68.5%	24.7%	6.8%	66.7%	33.3%	0.0%	62.5%	37.5%	0.0%	69.2%	15.4%	15.4%	55.6%	38.9%	5.6%	76.9%	15.4%	7.7%	72.7%	27.3%	0.0%	84.6%	7.7%	7.7%	83.3%	8.3%	8.3%	54.5%	36.4%	9.1%	66.7%	26.7%	6.7%	72.7%	27.3%	0.0%	64.7%	17.6%	17.6%			
6	行田総合病院	89	1.9%	89.0%	9.1%	0.0%	0.0%	0.0%	100.0%	0.0%	0.0%	100.0%	0.0%	0.0%	85.7%	14.3%	0.0%	100.0%	0.0%	0.0%	92.3%	0.0%	0.0%	90.9%	9.1%	0.0%	100.0%	0.0%	0.0%	100.0%	0.0%	0.0%	16.7%	58.3%	25.0%	0.0%	85.7%	14.3%	0.0%	90.2%	9.8%	9.8%		
7	平沼台病院	40	90.0%	8.0%	2.0%	91.7%	8.3%	0.0%	88.2%	11.8%	0.0%	82.4%	17.6%	0.0%	100.0%	0.0%	0.0%	83.3%	16.7%	0.0%	85.7%	0.0%	14.3%	100.0%	0.0%	0.0%	87.5%	12.5%	0.0%	100.0%	0.0%	0.0%	100.0%	0.0%	0.0%	83.3%	16.7%	0.0%	86.7%	6.7%	6.7%			
8	南府田病院	34	93.6%	4.1%	2.3%	100.0%	0.0%	0.0%	93.3%	0.0%	6.7%	90.9%	0.0%	9.1%	93.3%	6.7%	0.0%	100.0%	0.0%	0.0%	90.9%	9.1%	0.0%	86.7%	6.7%	6.7%	100.0%	0.0%	0.0%	85.0%	15.0%	0.0%	93.3%	0.0%	6.7%	90.9%	9.1%	0.0%	100.0%	0.0%	0.0%			
9	汐田総合病院	58	88.3%	7.4%	4.3%	93.8%	0.0%	6.3%	100.0%	0.0%	0.0%	100.0%	0.0%	0.0%	100.0%	0.0%	0.0%	95.5%	4.5%	0.0%	81.8%	13.6%	4.5%	77.3%	13.6%	9.1%	85.0%	5.0%	10.0%	91.7%	4.2%	4.2%	100.0%	0.0%	0.0%	82.6%	13.0%	4.3%	68.2%	22.7%	9.1%			
10	豊原総合病院	47	91.5%	6.6%	1.9%	82.4%	11.8%	0.0%	93.8%	5.0%	0.0%	93.8%	6.3%	0.0%	87.0%	8.7%	4.3%	100.0%	0.0%	0.0%	94.7%	0.0%	0.0%	93.8%	6.3%	0.0%	92.9%	7.1%	0.0%	88.9%	5.6%	5.6%	100.0%	0.0%	0.0%	85.7%	14.3%	0.0%	90.0%	10.0%	0.0%			
11	総合大塚会病院	50	74.7%	16.7%	8.6%	0.0%	0.0%	0.0%	42.9%	57.1%	0.0%	83.3%	8.3%	8.3%	87.5%	12.5%	0.0%	78.6%	21.4%	0.0%	71.4%	14.3%	14.3%	80.0%	6.7%	13.3%	68.0%	20.0%	12.0%	80.0%	13.3%	6.7%	70.6%	17.6%	11.8%	82.6%	8.7%	8.7%	66.7%	23.8%	9.3%			
12	塚本病院	50	84.2%	11.1%	4.7%	0.0%	0.0%	0.0%	87.5%	12.5%	0.0%	81.0%	9.5%	9.5%	90.3%	3.2%	6.5%	77.1%	14.3%	8.6%	85.4%	10.4%	4.2%	84.1%	9.1%	6.8%	88.9%	11.1%	0.0%	83.3%	14.3%	2.4%	86.4%	9.1%	4.5%	85.1%	14.9%	0.0%	78.0%	12.2%	9.8%			
13	関西メディカール病院	45	88.9%	9.3%	2.0%	100.0%	0.0%	0.0%	85.7%	14.3%	0.0%	83.3%	8.3%	8.3%	72.3%	20.0%	6.7%	80.0%	20.0%	0.0%	89.5%	10.5%	0.0%	100.0%	0.0%	0.0%	96.0%	4.0%	0.0%	85.0%	10.0%	5.0%	88.9%	5.6%	5.6%	96.2%	3.8%	0.0%	89.5%	10.5%	0.0%			
14	大塚脳神経外科病院	31	70.2%	6.0%	23.8%	0.0%	0.0%	0.0%	10.0%	10.0%	80.0%	0.0%	0.0%	80.0%	0.0%	20.0%	0.0%	40.0%	60.0%	90.0%	0.0%	10.0%	90.0%	0.0%	10.0%	75.0%	12.5%	12.5%	75.0%	0.0%	25.0%	66.7%	8.3%	25.0%	100.0%	0.0%	0.0%	100.0%	0.0%	0.0%				
15	尼崎中央病院	45	82.4%	14.5%	3.2%	100.0%	0.0%	0.0%	70.0%	30.0%	0.0%	81.3%	18.8%	0.0%	87.0%	4.3%	8.7%	95.8%	4.2%	0.0%	94.7%	5.3%	0.0%	83.3%	8.3%	8.3%	77.3%	22.7%	0.0%	57.1%	38.1%	4.8%	75.0%	20.0%	5.0%	88.9%	5.6%	5.6%	87.0%	13.0%	0.0%			
16	脳神経センター大田記念病院	50	89.7%	9.2%	1.1%	100.0%	0.0%	0.0%	0.0%	0.0%	0.0%	50.0%	50.0%	0.0%	60.0%	40.0%	0.0%	75.0%	25.0%	0.0%	100.0%	0.0%	0.0%	90.9%	9.1%	0.0%	90.0%	10.0%	0.0%	100.0%	0.0%	0.0%	100.0%	0.0%	0.0%	100.0%	0.0%	0.0%	78.6%	14.3%	7.1%			
17	井野川病院	49	-	-	-	-	-	-	-	-	-	-	-	-	-	-	-	-	-	-	-	-	-	-	-	-	-	-	-	-	-	-	-	-	-	-	-	-	-	-				
18	HITO病院	50	87.4%	11.1%	1.5%	89.3%	10.7%	0.0%	83.3%	11.1%	5.6%	78.9%	21.1%	0.0%	92.0%	8.0%	0.0%	81.0%	14.3%	4.8%	84.6%	11.5%	3.8%	92.0%	8.0%	0.0%	92.3%	7.7%	0.0%	95.2%	4.8%	0.0%	91.3%	8.7%	0.0%	80.0%	15.0%	5.0%	82.4%	17.6%	0.0%	91.7%	8.3%	0.0%
19	茶臼水光会総合病院	49	85.8%	8.8%	5.4%	85.0%	15.0%	0.0%	87.5%	6.3%	6.3%	84.2%	5.3%	10.5%	88.9%	0.0%	11.1%	85.7%	9.5%	4.8%	66.7%	8.3%	25.0%	95.5%	4.5%	0.0%	95.2%	4.8%	0.0%	91.3%	8.7%	0.0%	73.3%	20.0%	6.7%	90.5%	9.5%	0.0%	84.2%	15.8%	0.0%			
20	那珂川病院	46	-	-	-	-	-	-	-	-	-	-	-	-	-	-	-	-	-	-	-	-	-	-	-	-	-	-	-	-	-	-	-	-	-	-	-	-	-	-				
21	塚本病院	131	76.5%	17.0%	6.5%	50.0%	50.0%	0.0%	64.0%	28.0%	8.0%	83.3%	10.4%	6.3%	78.5%	12.3%	9.2%	63.6%	24.2%	12.1%	81.8%	12.7%	5.5%	75.8%	14.5%	9.7%	75.4%	16.9%	7.7%	76.4%	19.4%	4.2%	88.5%	11.5%	1.9%	82.0%	14.8%	3.3%	73.1%	22.4%	4.5%			
22	塚本長瀬白ハビリテーション病院	94	84.6%	11.5%	3.8%	33.3%	33.3%	33.3%	86.7%	13.3%	0.0%	76.5%	20.6%	2.9%	91.1%	2.2%	6.7%	77.6%	20.4%	2.0%	83.3%	8.3%	8.3%	76.6%	19.1%	4.3%	84.8%	13.0%	2.2%	93.3%	0.0%	6.7%	90.2%	7.3%	2.4%	92.5%	7.5%	0.0%	82.9%	14.6%	2.4%			
23	和国病院	42	78.7%	16.0%	5.3%	0.0%	100.0%	0.0%	75.0%	25.0%	0.0%	40.0%	40.0%	20.0%	100.0%	0.0%	0.0%	88.9%	0.0%	11.1%	85.7%	14.3%	0.0%	86.7%	6.7%	6.7%	87.5%	12.5%	0.0%	91.7%	8.3%	0.0%	75.0%	16.7%	8.3%	66.7%	16.7%	16.7%	63.6%	36.4%	0.0%			

ADLスコアの改善率(回復リハ)%(年度平均)



■ ADLスコアの改善率(地域包括ケア)

No.	病名	病棟数	2019年4月			2019年5月			2019年6月			2019年7月			2019年8月			2019年9月			2019年10月			2019年11月			2019年12月			2020年1月			2020年2月								
			改善率	維持率	悪化率	改善率	維持率	悪化率	改善率	維持率	悪化率	改善率	維持率	悪化率	改善率	維持率	悪化率	改善率	維持率	悪化率	改善率	維持率	悪化率	改善率	維持率	悪化率	改善率	維持率	悪化率	改善率	維持率	悪化率									
1	乳癌手術	40	21.3%	67.6%	11.1%	34.4%	53.1%	12.5%	25.0%	56.8%	18.2%	70.5%	11.4%	19.6%	64.7%	15.7%	8.6%	82.8%	8.6%	20.4%	65.3%	14.3%	18.8%	70.8%	10.4%	13.3%	78.3%	8.3%	29.0%	58.1%	12.9%	25.5%	66.0%	8.5%	21.4%	71.4%	7.1%	20.0%	72.7%	7.3%	
2	脳神経科手術	12	23.5%	72.5%	4.0%	30.8%	69.2%	0.0%	16.7%	75.0%	8.3%	14.3%	85.7%	0.0%	38.9%	61.1%	0.0%	23.1%	15.4%	37.5%	62.5%	0.0%	4.3%	91.3%	4.3%	38.9%	61.1%	0.0%	14.3%	76.2%	2.5%	25.0%	75.0%	0.0%	29.2%	70.8%	0.0%	12.5%	75.0%	12.5%	
3	泌尿器科手術	46	20.1%	75.9%	4.3%	28.0%	69.0%	3.0%	17.6%	80.4%	2.0%	21.8%	76.6%	2.0%	28.2%	67.6%	4.2%	28.8%	64.4%	6.8%	21.6%	75.0%	2.4%	20.0%	72.7%	7.3%	15.7%	76.9%	7.4%	17.6%	80.1%	2.2%	18.2%	77.8%	4.0%	14.9%	79.3%	5.7%	14.9%	82.2%	3.0%
4	消化器科手術	47	6.7%	91.2%	4.1%	0.0%	0.0%	0.0%	0.0%	0.0%	0.0%	0.0%	0.0%	0.0%	0.0%	0.0%	0.0%	0.0%	0.0%	0.0%	0.0%	0.0%	0.0%	9.5%	95.5%	0.0%	9.7%	87.1%	3.2%	8.9%	89.0%	11.1%	0.0%	97.3%	2.7%	0.0%	97.1%	2.9%	0.0%	100.0%	0.0%
5	消化器科手術	49	14.8%	76.2%	9.0%	15.0%	81.7%	3.3%	13.2%	77.9%	8.8%	23.2%	67.9%	8.9%	13.8%	77.6%	8.6%	14.1%	78.9%	7.0%	16.1%	77.4%	6.5%	10.4%	82.1%	7.5%	18.3%	76.8%	4.9%	13.6%	72.8%	13.6%	21.2%	63.6%	15.2%	5.6%	84.5%	9.9%	14.7%	72.1%	13.2%
6	整形外科手術	12	0.0%	98.8%	1.2%	0.0%	100.0%	0.0%	0.0%	100.0%	0.0%	0.0%	100.0%	0.0%	0.0%	100.0%	0.0%	0.0%	100.0%	0.0%	0.0%	100.0%	0.0%	0.0%	75.0%	25.0%	0.0%	100.0%	0.0%	0.0%	100.0%	0.0%	0.0%	100.0%	0.0%	0.0%	100.0%	0.0%	0.0%	100.0%	0.0%
7	呼吸器科手術	14	56.8%	26.0%	17.1%	0.0%	0.0%	60.0%	20.0%	20.0%	70.6%	17.6%	11.8%	45.5%	27.3%	27.3%	33.3%	16.7%	60.0%	38.9%	33.3%	27.8%	50.0%	27.8%	73.3%	26.7%	0.0%	73.0%	0.0%	73.0%	26.7%	0.0%	69.6%	8.7%	12.5%	66.7%	20.0%	50.0%	28.6%	21.4%	
8	呼吸器科手術	14	10.0%	89.5%	0.5%	15.0%	85.0%	0.0%	5.9%	89.2%	5.9%	14.3%	85.7%	0.0%	5.3%	94.7%	0.0%	8.3%	91.7%	0.0%	18.8%	81.3%	0.0%	15.8%	84.2%	0.0%	8.3%	91.7%	0.0%	16.7%	83.3%	0.0%	6.3%	93.8%	0.0%	5.3%	94.7%	0.0%	3.8%	96.2%	0.0%
9	内科手術	51	2.2%	95.6%	2.2%	0.0%	100.0%	0.0%	28.6%	71.4%	0.0%	0.0%	100.0%	0.0%	11.1%	77.8%	11.1%	0.0%	100.0%	0.0%	12.5%	87.5%	0.0%	0.0%	90.0%	10.0%	0.0%	100.0%	0.0%	0.0%	100.0%	0.0%	0.0%	100.0%	0.0%	0.0%	100.0%	0.0%			
10	循環器科手術	10	0.0%	0.0%	0.0%	0.0%	0.0%	0.0%	0.0%	0.0%	0.0%	0.0%	0.0%	0.0%	0.0%	0.0%	0.0%	0.0%	0.0%	0.0%	0.0%	0.0%	0.0%	0.0%	0.0%	0.0%	0.0%	0.0%	0.0%	0.0%	0.0%	0.0%	0.0%	0.0%	0.0%	0.0%	0.0%				
11	泌尿器科手術	37	36.4%	55.3%	8.3%	16.7%	75.0%	8.3%	21.2%	72.7%	4.1%	24.5%	58.5%	17.0%	32.5%	60.0%	7.5%	31.4%	64.7%	5.9%	36.2%	53.2%	10.6%	51.9%	40.7%	7.4%	41.1%	51.8%	7.1%	21.7%	61.7%	6.7%	41.5%	43.3%	13.2%	40.7%	50.0%	3.3%	38.3%	55.3%	6.4%
12	呼吸器科手術	38	41.4%	51.3%	7.4%	47.5%	47.5%	5.0%	40.0%	57.5%	2.5%	37.5%	53.1%	9.4%	31.4%	54.3%	14.3%	36.4%	54.5%	9.1%	50.0%	38.2%	11.8%	34.1%	63.4%	4.4%	38.1%	50.0%	11.9%	49.0%	42.9%	8.2%	39.0%	61.0%	0.0%	44.1%	50.0%	5.9%	47.7%	43.2%	9.1%
13	呼吸器科手術	56	33.0%	57.3%	9.7%	36.5%	57.6%	5.9%	35.1%	54.5%	10.4%	25.9%	69.0%	5.2%	35.1%	55.8%	9.1%	30.1%	59.0%	10.8%	35.2%	61.4%	3.4%	36.0%	49.3%	14.7%	21.7%	60.7%	11.6%	40.2%	50.0%	9.8%	33.3%	55.6%	11.1%	33.3%	54.2%	12.5%	28.0%	58.0%	14.0%
14	呼吸器科手術	104	36.8%	52.6%	10.6%	43.1%	41.5%	15.4%	41.4%	48.6%	10.0%	34.3%	57.1%	8.6%	37.3%	45.8%	16.9%	41.3%	42.9%	15.9%	43.2%	54.1%	2.7%	36.3%	55.0%	8.8%	28.8%	64.4%	6.8%	32.1%	58.9%	8.9%	27.3%	60.6%	12.1%	38.3%	45.0%	16.7%	37.5%	54.2%	8.3%
15	呼吸器科手術	38	33.3%	58.2%	8.5%	52.1%	42.3%	70.6%	17.6%	11.8%	33.3%	60.0%	6.7%	38.5%	55.6%	42.3%	51.7%	0.0%	38.5%	61.5%	27.0%	23.1%	76.9%	0.0%	33.3%	66.7%	0.0%	29.4%	58.8%	11.8%	21.7%	69.6%	8.7%	12.5%	66.7%	20.0%	50.0%	28.6%	21.4%		
16	呼吸器科手術	4	0.0%	100.0%	0.0%	0.0%	0.0%	0.0%	0.0%	0.0%	0.0%	0.0%	0.0%	0.0%	0.0%	0.0%	0.0%	0.0%	0.0%	0.0%	0.0%	0.0%	0.0%	0.0%	0.0%	0.0%	0.0%	0.0%	0.0%	0.0%	0.0%	0.0%	0.0%	0.0%	0.0%	0.0%	0.0%				
17	呼吸器科手術	60	47.8%	40.8%	11.4%	50.0%	44.7%	5.3%	36.9%	47.6%	15.5%	37.6%	36.6%	9.8%	46.8%	43.5%	9.7%	43.6%	47.9%	8.5%	49.3%	38.0%	12.7%	41.3%	48.0%	10.7%	50.0%	36.8%	13.2%	52.9%	34.5%	12.6%	46.9%	35.8%	17.3%	55.0%	35.0%	10.0%	-	-	
18	呼吸器科手術	38	37.4%	54.9%	7.6%	14.8%	85.2%	0.0%	33.3%	66.0%	6.7%	24.1%	66.7%	9.3%	31.6%	61.4%	7.0%	32.7%	55.8%	11.5%	45.7%	45.7%	8.7%	33.0%	63.5%	2.5%	43.2%	52.3%	4.5%	55.0%	35.0%	10.0%	47.1%	45.1%	7.8%	41.7%	52.8%	5.0%	42.2%	44.4%	13.3%
19	呼吸器科手術	47	36.7%	56.6%	8.7%	28.8%	50.6%	10.6%	41.1%	38.9%	0.0%	53.3%	40.0%	6.7%	40.9%	56.8%	2.3%	30.8%	63.5%	8.8%	45.9%	45.9%	8.1%	46.8%	51.6%	1.6%	29.6%	64.8%	5.6%	22.0%	64.0%	4.0%	28.6%	65.3%	6.1%	34.1%	61.0%	4.9%	26.2%	70.5%	2.3%
20	呼吸器科手術	35	22.7%	71.7%	5.5%	24.1%	69.0%	6.9%	24.2%	72.7%	3.0%	17.0%	74.5%	8.5%	26.0%	70.0%	4.0%	29.6%	70.4%	0.0%	16.1%	73.2%	10.7%	11.3%	85.5%	3.2%	33.8%	55.9%	10.3%	27.4%	69.4%	3.2%	12.5%	84.4%	3.1%	23.5%	68.6%	7.8%	22.2%	74.1%	3.7%
21	呼吸器科手術	24	0.0%	0.0%	0.0%	0.0%	0.0%	0.0%	0.0%	0.0%	0.0%	0.0%	0.0%	0.0%	0.0%	0.0%	0.0%	0.0%	0.0%	0.0%	0.0%	0.0%	0.0%	0.0%	0.0%	0.0%	0.0%	0.0%	0.0%	0.0%	0.0%	0.0%	0.0%	0.0%	0.0%	0.0%	0.0%				
22	呼吸器科手術	60	28.0%	58.8%	13.0%	13.0%	87.0%	0.0%	32.4%	52.9%	14.7%	25.9%	61.1%	13.0%	32.0%	60.0%	8.0%	34.4%	42.2%	23.4%	30.0%	52.0%	18.0%	29.8%	63.8%	6.4%	29.2%	60.4%	10.4%	28.3%	56.6%	15.1%	25.0%	58.3%	16.7%	27.4%	61.3%	11.3%	24.2%	65.2%	10.6%
23	呼吸器科手術	59	46.6%	47.9%	5.5%	45.8%	44.1%	10.2%	56.8%	47.5%	1.7%	55.7%	38.6%	5.7%	47.0%	43.9%	9.1%	36.5%	56.8%	6.8%	35.5%	48.8%	41.9%	50.0%	8.1%	43.1%	54.2%	2.8%	57.4%	41.2%	1.5%	51.4%	43.1%	5.6%	44.4%	51.1%	4.4%	50.0%	46.6%	5.4%	
24	呼吸器科手術	27	56.9%	28.2%	14.8%	0.0%	0.0%	0.0%	0.0%	100.0%	55.0%	20.0%	25.0%	69.2%	11.9%	19.2%	43.5%	13.0%	13.0%	25.0%	70.0%	5.0%	23.5%	76.5%	0.0%	66.7%	22.2%	11.1%	84.2%	10.5%	5.3%	65.0%	15.0%	20.0%	65.2%	17.4%	17.4%	47.4%	9.5%	19.0%	
25	呼吸器科手術	50	18.0%	79.1%	2.9%	19.2%	78.8%	2.0%	21.1%	74.6%	4.2%	13.6%	80.3%	6.1%	22.4%	77.6%	0.0%	14.7%	82.7%	2.7%	27.7%	70.2%	2.1%	17.2%	77.6%	5.2%	18.2%	80.3%	1.5%	13.1%	86.9%	0.0%	17.6%	81.1%	1.4%	14.9%	78.7%	6.4%	16.1%	77.4%	6.5%
26	呼吸器科手術	26	27.0%	65.4%	7.6%	24.5%	71.4%	4.1%	34.5%	52.2%	10.3%	30.8%	59.0%	10.3%	28.9%	64.4%	6.7%	16.3%	79.1%	4.7%	26.3%	65.8%	7.9%	31.4%	60.0%	8.6%	23.7%	71.7%	6.5%	34.3%	54.3%	11.4%	24.3%	70.3%	5.4%	26.5%	70.6%	2.9%	28.3%	56.1%	14.6%
27	呼吸器科手術	34	31.4%	64.2%	4.4%	14.3%	85.7%	0.0%	16.7%	86.7%	16.7%	7.7%	92.3%	0.0%	5.9%	94.1%	0.0%	20.0%	80.0%	0.0%	35.7%	64.3%	0.0%	11.1%	77.8%	11.1%	46.7%	53.3%	0.0%	53.3%	46.7%	0.0%	55.6%	22.2%	22.2%	50.0%	37.5%	12.5%	50.0%	50.0%	0.0%
28	呼吸器科手術	50	56.9%	30.4%	12.7%	60.0%	27.5%	12.5%	53.3%	35.6%	11.1%	58.3%	36.1%	5.6%	48.7%	33.3%	17.9%	50.0%	42.1%	7.9%	60.0%	32.5%	7.5%	57.1%	33.3%	6.9%	66.7%	22.2%	11.1%	62.0%	20.0%	18.0%	50.1%	25.0%	15.9%	57.1%	28.6%	14.3%	51.1%	31.1%	17.8%
29	呼吸器科手術	34	23.5%	71.5%	5.0%	11.1%	80.6%	8.3%	28.2%	63.4%	8.5%	32.6%	62.8%	4.7%	24.1%	71.3%	4.6%	27.6%	71.3%	1.1%	24.2%	71.4%	4.4%	20.0%	78.7%	1.3%	18.5%	74.1%	7.4%	26.6%	67.1%	6.3%	17.6%	78.8%	3.5%	23.0%	73.0%	4.1%	20.8%	70.8%	8.3%
30	呼吸器科手術	49	53.2%	39.4%	7.4%	53.1%	14.3%	35.7%	57.1%	35.7%	7.1%	48.5%	42.6%	8.8%	51.8%	39.3%	8.9%																								

■ ADLスコアの改善率(療養)

No	病院名	主目的	病床数	2019年度			2019年4月			2019年5月			2019年6月			2019年7月			2019年8月			2019年9月			2019年10月			2019年11月			2019年12月			2020年1月			2020年2月			2020年3月		
				改善症例	維持症例	悪化症例	改善症例	維持症例	悪化症例	改善症例	維持症例	悪化症例	改善症例	維持症例	悪化症例	改善症例	維持症例	悪化症例	改善症例	維持症例	悪化症例	改善症例	維持症例	悪化症例	改善症例	維持症例	悪化症例	改善症例	維持症例	悪化症例	改善症例	維持症例	悪化症例	改善症例	維持症例	悪化症例	改善症例	維持症例	悪化症例			
1	同愛記念病院		30	46.1%	43.3%	10.6%	40.0%	33.3%	26.7%	25.0%	66.7%	8.3%	33.3%	55.6%	11.1%	66.7%	33.3%	0.0%	57.1%	42.9%	0.0%	22.2%	66.7%	11.1%	46.2%	38.5%	15.4%	54.5%	45.5%	0.0%	52.6%	42.1%	5.3%	37.5%	50.0%	12.5%	60.0%	30.0%	10.0%	63.6%	18.2%	18.2%
2	尼崎中央病院		48	39.3%	57.1%	3.6%	0.0%	0.0%	66.7%	33.3%	0.0%	100.0%	0.0%	0.0%	66.7%	33.3%	0.0%	50.0%	50.0%	0.0%	100.0%	0.0%	0.0%	0.0%	0.0%	100.0%	0.0%	33.3%	66.7%	0.0%	25.0%	50.0%	25.0%	0.0%	100.0%	0.0%	33.3%	66.7%	0.0%	100.0%	0.0%	
3	真星病院		90	12.9%	64.5%	22.6%	0.0%	66.7%	33.3%	0.0%	50.0%	50.0%	0.0%	100.0%	0.0%	0.0%	0.0%	0.0%	75.0%	25.0%	50.0%	50.0%	0.0%	50.0%	50.0%	0.0%	0.0%	100.0%	20.0%	80.0%	0.0%	100.0%	0.0%	0.0%	100.0%	0.0%	20.0%	40.0%	40.0%			
4	井野口病院		42	-	-	-	-	-	-	-	-	-	-	-	-	-	-	-	-	-	-	-	-	-	-	-	-	-	-	-	-	-	-	-	-	-	-	-				
5	金光病院		47	42.1%	26.3%	31.6%	75.0%	0.0%	25.0%	0.0%	100.0%	0.0%	66.7%	0.0%	33.3%	100.0%	0.0%	0.0%	50.0%	0.0%	50.0%	0.0%	0.0%	0.0%	0.0%	0.0%	100.0%	0.0%	0.0%	0.0%	100.0%	0.0%	0.0%	0.0%	0.0%	0.0%	50.0%	50.0%	0.0%	50.0%	50.0%	
6	西岡病院		50	31.3%	56.3%	12.5%	50.0%	50.0%	0.0%	0.0%	66.7%	33.3%	50.0%	50.0%	0.0%	33.3%	50.0%	16.7%	33.3%	66.7%	0.0%	0.0%	100.0%	0.0%	66.7%	33.3%	0.0%	25.0%	50.0%	25.0%	0.0%	100.0%	0.0%	33.3%	66.7%	0.0%	33.3%	33.3%	33.3%			
7	帯広中央病院		46	0.0%	0.0%	0.0%	0.0%	0.0%	0.0%	0.0%	0.0%	0.0%	0.0%	0.0%	0.0%	0.0%	0.0%	0.0%	0.0%	0.0%	0.0%	0.0%	0.0%	0.0%	0.0%	0.0%	0.0%	0.0%	0.0%	0.0%	0.0%	0.0%	0.0%	0.0%	0.0%	0.0%	0.0%	0.0%				
8	済生会病院		93	40.0%	60.0%	0.0%	0.0%	0.0%	0.0%	0.0%	100.0%	0.0%	0.0%	0.0%	0.0%	0.0%	0.0%	0.0%	0.0%	0.0%	0.0%	0.0%	0.0%	0.0%	0.0%	0.0%	0.0%	0.0%	0.0%	0.0%	0.0%	0.0%	0.0%	0.0%	100.0%	0.0%	50.0%	50.0%	100.0%	0.0%	0.0%	
9	志村大宮病院		48	0.0%	100.0%	0.0%	0.0%	100.0%	0.0%	0.0%	100.0%	0.0%	0.0%	0.0%	0.0%	100.0%	0.0%	0.0%	0.0%	0.0%	0.0%	0.0%	0.0%	0.0%	0.0%	0.0%	0.0%	0.0%	0.0%	0.0%	0.0%	0.0%	0.0%	0.0%	0.0%	0.0%	0.0%	100.0%	0.0%	100.0%	0.0%	
10	行田総合病院		54	3.0%	97.0%	0.0%	0.0%	0.0%	0.0%	0.0%	0.0%	0.0%	0.0%	0.0%	100.0%	0.0%	0.0%	100.0%	0.0%	0.0%	0.0%	0.0%	0.0%	0.0%	0.0%	0.0%	0.0%	0.0%	0.0%	0.0%	0.0%	0.0%	0.0%	0.0%	0.0%	0.0%	0.0%	0.0%	0.0%			
11	和田病院		40	42.9%	42.9%	14.3%	0.0%	0.0%	0.0%	0.0%	0.0%	0.0%	0.0%	0.0%	0.0%	0.0%	0.0%	50.0%	50.0%	0.0%	0.0%	0.0%	0.0%	0.0%	0.0%	0.0%	33.3%	33.3%	33.3%	50.0%	50.0%	0.0%	33.3%	33.3%	33.3%	0.0%	100.0%	0.0%	0.0%	100.0%	0.0%	
12	新小倉病院		41	0.0%	0.0%	0.0%	0.0%	0.0%	0.0%	0.0%	0.0%	0.0%	0.0%	0.0%	0.0%	0.0%	0.0%	0.0%	0.0%	0.0%	0.0%	0.0%	0.0%	0.0%	0.0%	0.0%	0.0%	0.0%	0.0%	0.0%	0.0%	0.0%	0.0%	0.0%	0.0%	0.0%	0.0%	0.0%				
13	大分記念病院		34	81.3%	6.3%	12.5%	100.0%	0.0%	0.0%	0.0%	0.0%	0.0%	100.0%	0.0%	0.0%	0.0%	0.0%	0.0%	0.0%	0.0%	0.0%	0.0%	0.0%	0.0%	0.0%	0.0%	0.0%	0.0%	0.0%	0.0%	0.0%	0.0%	50.0%	50.0%	0.0%	66.7%	0.0%	33.3%	100.0%	0.0%	0.0%	

ADLスコアの改善率(療養)(%) (年度平均)

